

Osborn

No Compromise Loudspeakers SPECIFICATIONS for Osborn "Monument."

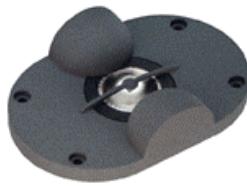
(Photograph shows fiberglass tweeter in the Monument)



SPEAKER DIMENSIONS 1620 X 440 X 450 mm.
WEIGHT (Monument) 116 Kg.
(Grand Monument) 130 Kg. **Reference** 170 Kg.
EFFICIENCY 92 db for 1 watt at 1 meter.

DRIVER DIMENSIONS

Tweeter (For Grand Monument)



5 mm thick precision machined solid aluminium face plate with 2 part precision machined solid aluminium wave guides. Inverted titanium dome, coated foam surround. 20 mm diameter voice coil, aluminium former,

Ferrofluid cooled. High Force Neodymium ring magnet, Telar 57 Pole and plates, phase plug.

Tweeter (For Monument) As per photo. 25 mm fiber glass inverted dome with 1.5 Kg magnet. Dome weight 0.25 g.

Mid Range



179 mm Neoglass cone with cast aluminium frame. 40mm edge wound flat aluminium wire. Total moving mass 11.8g. Driver weight 3.0 Kg.

Bass

2 X 300 mm Polyglass. 77 mm edge wound flat copper wire. Cone weight 94.6 g. Driver weight 2.5 g.

FREQUENCY RESPONSE

20 to 18000 Hz +/- 3 db. -10db points 10 and 21000 Hz.
Resonant Frequency 30 Hz

CROSSOVER POINTS

125 Hz and 3500 Hz @ 12 db/Octave.



MINIMUM IMPEDANCE 5.0 Ohm.
REC. MAXIMUM POWER 120 Watts R.M.S per Channel
REC. MINIMUM POWER 10 Watts R.M.S per Channel.

The above specifications show why these speakers are capable of such extraordinary transient performance and yet reveal such intimate detail in the music. (These are the same

bass drivers as used in the Wilson Audio Grand Slams US\$100,000) and the same motor assembly and basket as GM Labs Grand Utopia. (US\$80,000) The tweeter is the new upgraded version of that used in the Grand Utopia and vastly superior to the tweeter used in the Grand Slam, which uses a similar tweeter to the Standard Monument and Epitome, except that Wilson uses the Titanium dome, whilst we prefer the top end extension and lightning speed of the fiberglass. This allows the decay of the ringing of small bells to be clearly audible. The coated titanium tweeters could not match this performance. The Osborn Monument has been designed and constructed in Australia, without compromise, in order to obtain an absolutely awesome sound quality. The only criteria in the choice of components, materials, size and cost is the achievement of the ultimate sound quality.

Previously the choice of a speaker always led to major compromises. If you wanted musical transparency and neutrality, you have had to turn to more delicate speaker systems that are less efficient, less dynamic, and cannot play as loud. You have had to trade off one set of ideals against the other. For this reason most high end speakers are small or medium size. Therefore most were of similar performance, each trading some element of the performance to gain an edge in whatever area the designer felt was the most important. Large powerful speakers which could reproduce the weight and power of live music became slow, ill defined and lacked the dynamics and transient attack of real instruments. Large speaker systems also tended to have a less precise soundstage and did not handle intimate detail as well as smaller, less dynamic systems. One of the first speaker systems to overcome these problems and combine the best attributes of both systems was the Osborn Epitome. Many considered the Epitome, matched with the optional bass units to be virtually the mythically perfect speaker. The success of the Epitome combination led the designer, Greg Osborn to extrapolate the formula to its ultimate conclusion..... **The Monument.** The Monument is a monster speaker standing 1.62 meters high and weighing more than most adults.

The Grand Monument uses the incredible Audiom TLR tweeter. This is arguably the finest tweeter available today. This is the new version of the tweeter used in the JM Labs Grand Utopia. The grand Utopia is considered by many to be the finest speaker available today. (By those who have not been privileged to hear the Grand Monument.) The TLR tweeter features two unique defractors to give the tweeter a wider dispersion. The Grand Utopia suffers from "beaming", this results in a small sweet spot, which results in poor stereo imaging outside this narrow area. The Grand Monument has a superb stereo image right across the listening area. The magnet assembly is constructed of a Ferrofluid cooled. High Force Neodymium ring magnet, This rare earth magnet has a much stronger and more focused magnetic field than even the best conventional magnet. The center Pole and plates are constructed of an alloy called Telar 57. This alloy contains absolutely no carbon and is incredibly difficult and expensive to manufacture, costing US\$1000 per tweeter to make. Recent improvements in metallurgy has reduced this cost, but the cost of the tweeter is 10 to 20 times the cost of other quality tweeters. The diaphragm is manufactured of an uncoated titanium 1 micron thick. This cutting edge technology results in a ruler flat frequency response, lightning fast transients and a truly awe inspiring naturalness.

The mid range and mid bass is handled by a 179 Polyglass coated Neoflex driver. The speed and sonic integrity of this driver is astonishing. The bass is handled by two monster 300 mm Polyglass bass drivers, weighing over 13 Kg each. These drivers have massive motor assemblies with exposed voice coils for instantaneous cooling. The massive magnet structure ensured that the cone is kept under ridged control at all times. The cabinets are constructed of very heavily braced 32 mm Customwood. **The front panel of the Grand Monuments has been increased to 64 mm and in the Reference all external surfaces are lined with a unique acoustic felt, lead sheet, felt sandwich for unrivalled cabinet solidarity.** Each Bass driver operates in its own massively braced, ported enclosure. The finest components available are used in the hard wired crossovers. The bass inductors weigh about 8 Kg. each. The overall performance is extraordinary. A huge precise soundstage with every instrument locked firmly into its own position in space. Plucked and percussion instruments are lightning fast with their natural resonance's and decay clearly audible. There is no dynamic compression, regardless of the volume. The bass is lightning fast with tremendous authority. The dynamic ability of these speakers is truly shocking, with bass that will shake the entire house and the listeners body.

. One of the amazing characteristics of the Monuments is their incredible bass control. This allows them to perform brilliantly in surprisingly small rooms, where lesser speakers overpower the room.

Osborn Loudspeakers Web Page <http://www.osbornloudspeakers.com.au>

Osborn Loudspeaker

17 Hammersley Court, Taylors Lakes, 3038. Victoria, Australia.

Telephone +(613) 93901564. Fax +(613) 93904775. Email osspeak@ihug.com.au